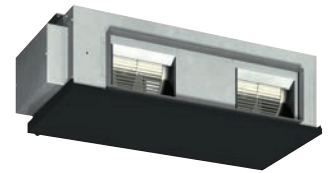


# Product Specifications



PEA-M/ZM Series (Ceiling Concealed)											
Indoor Unit		PEA-M100GAA			PEA-M125GAA			PEA-M140GAA			
Outdoor Unit		PUZ-M 100VKA	PUZ-ZM 100VKA	PUZ-ZM 100YKA2-A	PUZ-M 125VKA	PUZ-ZM 125VKA	PUZ-ZM 125YKA	PUZ-M 140VKA	PUZ-ZM 140VKA	PUZ-ZM 140YKA	
Refrigerant		R32									
Power Supply	Source	Outdoor power supply									
	Outdoor	V: 230V, Single-phase, 50Hz	V: 230V, Single-phase, 50Hz Y: 400V, Three-phase, 50Hz	V: 230V, Single-phase, 50Hz	V: 230V, Single-phase, 50Hz Y: 400V, Three-phase, 50Hz	V: 230V, Single-phase, 50Hz	V: 230V, Single-phase, 50Hz Y: 400V, Three-phase, 50Hz	V: 230V, Single-phase, 50Hz	V: 230V, Single-phase, 50Hz Y: 400V, Three-phase, 50Hz	V: 230V, Single-phase, 50Hz	
	Indoor	-									
Cooling	Capacity [Min-Rated-Max]	kW	4.00 - 10.00 - 10.60	4.90 - 10.00 - 11.40	4.90 - 10.00 - 11.40	6.00 - 12.00 - 13.50	5.50 - 12.50 - 14.00	5.50 - 12.50 - 14.00	6.20 - 14.00 - 15.30	6.20 - 14.00 - 15.30	6.20 - 14.00 - 15.30
	Total Input [Rated]	kW	3.08	2.39	2.39	3.81	3.52	3.52	4.22	4.10	4.10
	AEER/EER		3.12/3.24	4.01/4.18	3.93/4.18	3.04/3.14	3.45/3.55	3.40/3.55	3.22/3.31	3.33/3.41	3.29/3.41
	AEER [Part-load %]*1		4.40	-	-	3.83	-	-	-	-	-
	Running Current [Rated]*4	A	14.50	11.30	4.05	18.50	16.00	5.20	20.40	18.70	6.10
	Sound Pressure Level	In (Lo-Mid-Hi)	dB(A)	33 - 38 - 42	39 - 42			42 - 45			
		Out (PWL)	dB(A)	52 (71)	49 (69)	49 (69)	54 (72)	50 (70)	50 (70)	53 (71)	50 (70)
Air Volume (In) Lo-Mid-Hi	L/S	567 - 700				800 - 1000					
Heating	Capacity [Min-Rated-Max]	kW	2.80 - 12.50 - 12.50	4.50 - 11.20 - 14.00	4.50 - 11.20 - 14.00	4.10 - 14.00 - 15.50	5.00 - 14.00 - 16.00	5.00 - 14.00 - 16.00	5.70 - 16.00 - 18.00	5.70 - 16.00 - 18.00	5.70 - 16.00 - 18.00
	Total Input [Rated]	kW	3.36	2.51	2.51	3.54	3.27	3.27	4.20	3.90	3.90
	ACOP/COP*3		3.72/3.58	4.28/4.46	4.21/4.46	3.95/3.81	4.15/4.28	4.09/4.28	3.80/3.69	3.99/4.10	3.95/4.10
	Running Current [Rated]*5	A	15.80	11.50	4.26	17.30	15.40	5.40	20.30	17.70	6.20
	Sound Pressure Level	In (Lo-Mid-Hi)	dB(A)	39 - 42			42 - 45				
		Out (PWL)	dB(A)	54 (72)	51 (69)	51 (69)	56 (74)	52 (70)	52 (70)	54 (72)	52 (71)
Air Volume (In) Lo-Mid-Hi	L/S	567 - 700				800 - 1000					
Max. Running Current	A	23.28	30.78	14.78	29.78	31.86	15.86	30.86	32.86	15.86	
Indoor Unit	Input [Rated]	kW	0.21/0.21			0.49/0.49					
	Dimensions [HxWxD]	mm	400 x 1400 x 634								
	Weight	kg	63.0								
	Static Pressure	Pa	50/100/150								
Outdoor Unit	Dimensions [HxWxD]	mm	981 x 1050 x 330 (+40)	1338 x 1050 x 330 (+40)		981 x 1050 x 330 (+40)	1338 x 1050 x 330 (+40)				
	Weight	kg	76.0	113.0	114.0	84.0	113.0	114.0	99.0	113.0	114.0
	Breaker Size	A	32	32	16	32	32	16	40	40	16
Ext. Piping	Diameter [Liquid/Gas]	mm	ø9.52/ø15.88								
	Max. Length/Height	m	55/30	75/30		55/30	75/30		55/30	75/30	
Guaranteed Operating Range [Outdoor]	Cooling*2	°C	-5 (-15) ~ 46	-5 (-15) ~ 52		-5 (-15) ~ 46	-5 (-15) ~ 52		-5 (-15) ~ 46	-5 (-15) ~ 52	
	Heating	°C	-15 ~ 21	-20 ~ 21		-15 ~ 21	-20 ~ 21		-15 ~ 21	-20 ~ 21	
Supply Air Duct	mm	921 x 250									
Return Air Duct	mm	1102 x 330									
Pre-Charge Refrigerant	kg	3.10 (30m)	4.00 (30m)		3.60 (30m)	4.00 (30m)		4.00 (55m)	4.00 (30m)		
Additional Refrigerant	g/m	200	60		200	60		-	60		

\*1 MEPS compliant at part load.

\*2 With the optional air protection guide, cooling operation at -15°C outdoor temperature is possible.

\*3 Rated EER/COP for PEA-RP710/200WJA/250WHA are measured at 75Pa.

\* Sound pressure level for PEA-M125/140 are measured in anechoic chamber at ESP50 Pa.

Sound pressure level or PEA-RP170/200WHA/250WHA are measured in anechoic chamber at ESP150 Pa.

#### Rating Conditions:

\*4 Cooling: Indoor 27°C, D.B./19°C, W.B.  
Outdoor 35°C, D.B./24°C, W.B.

\*5 Heating: Indoor 20°C, D.B./15°C, W.B.  
Outdoor 7°C, D.B./6°C, W.B.